



# Operation Manual Qi-Max



# The Qi-Max

## What to expect from the Qi-Max and how to use it?

Thank you very much for choosing the Qi-Max. We have designed this stationary device especially for companies and public facilities. It protects you and your employees from radiation caused by communication technology.

Numerous scientific studies prove that radiation is harmful for our health. The Qi-Max reduces the health effects of electromagnetic radiation verifiably – regardless of whether it is your own terminal device, your neighbor's WiFi or even satellites and radio towers. Optimal long-term protection is your profit.

The Qi-Max works even more intensively if you touch the copper ring for a few seconds several times a day. The more often you interact with the device, the stronger you will perceive the effect and change.

<https://waveguard.com/en/blog/>



↘ You can find further information on the effect and construction of the Qi-Max on our YouTube channel.



# Product Description

## Technical data

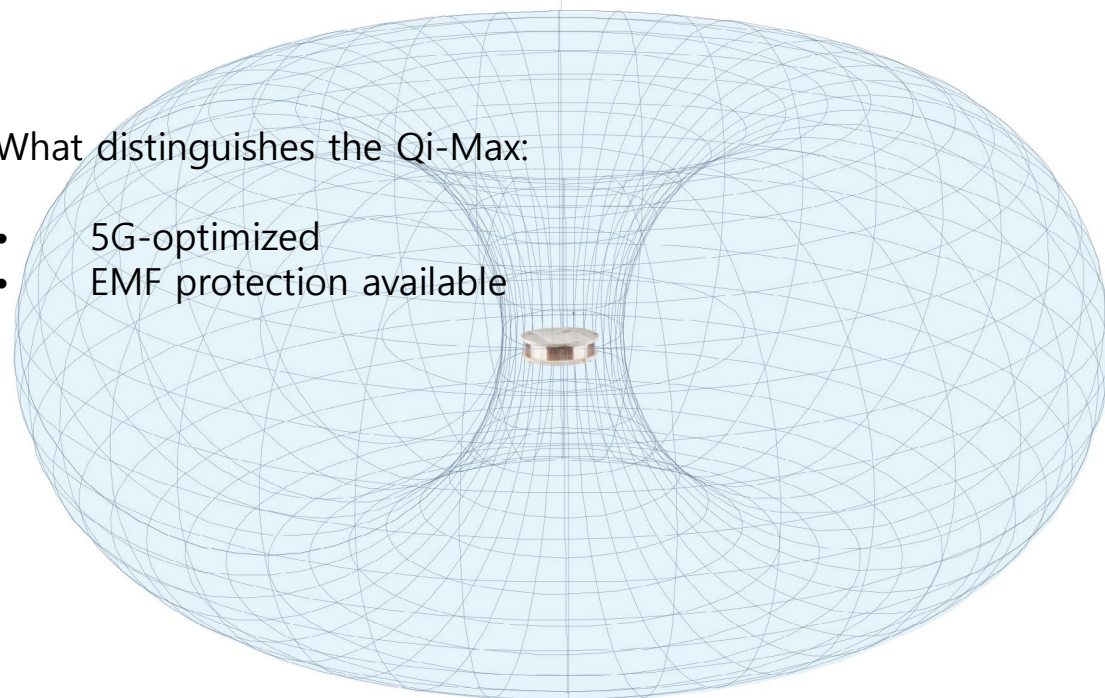
Product	Qi-Max;
Measurements	Ø = 60 cm, h = 28 cm;
Sphere of Action	50 m in radius;
Weight	approx. 20 kg;
Ring	copper;
Wood	oiled Swiss pine or dark glazed beech.

### Please note:

- ↘ Each Qi device is unique: grain, shading and color may vary slightly.
- ↘ Wood is a natural product, the weight is subject to fluctuations, e.g. due to more knotholes, etc.

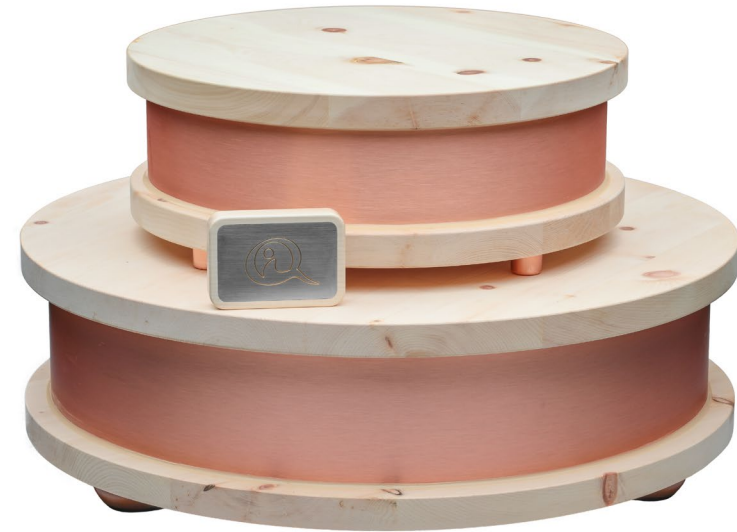
What distinguishes the Qi-Max:

- 5G-optimized
- EMF protection available

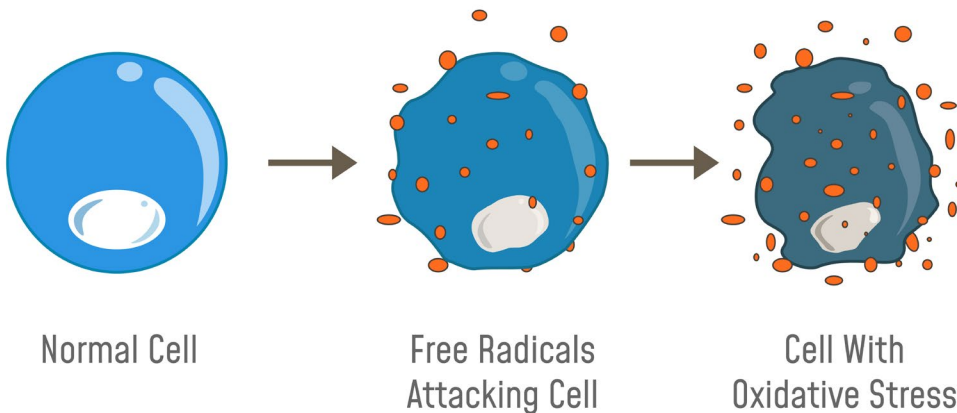


## Benefits of Qi technology:

- Reduces the effects of technical radiation sources;<sup>1</sup>
- According to studies, electromagnetic radiation is less harmful;<sup>1</sup>
- Studies suggest effectiveness of our devices;<sup>1</sup>
- Modern technology can therefore be used without hesitation;
- Restful sleep thanks to essential oils in Qi devices made from pine wood;<sup>2</sup>
- German hand-made technology;
- Each year, several thousand customers trust Waveguard with their radiation protection.



## OXIDATIVE STRESS



### Qi technology positively affects our biology:

- it has an antioxidant effect, reduces body stress reactions (oxidative stress);<sup>1</sup>
- it improves regeneration and wound healing;<sup>1</sup>
- it increases vitality, wellbeing and relaxation.<sup>1</sup>

<sup>1</sup> <https://waveguard.com/en/studies/>

<sup>2</sup> [http://humanresearch.at/newwebcontent/?page\\_id=96&lang=en](http://humanresearch.at/newwebcontent/?page_id=96&lang=en)



# Handling

## How do you set up the Qi-Max correctly?

- Remove the Qi-Max from its packaging carefully. Please follow the instructions on the outer packaging. The device contains glass parts. Therefore, please protect it from falls and blows.
- Place your Qi-Max in an interference-free environment, as centrally as possible in the house or apartment, in order to ensure the greatest possible protective field coverage.
- When setting up your Qi-Max, maintain a distance of at least 50 cm from all surrounding power sources (e.g. sockets) power cables and electronic end devices (e.g. radio, TV).
- Look for a free location: the Qi-Max must not be installed or built into something, nor placed on movable tables, etc.
- Protect your Qi-Max from humidity and strong heat, e.g. from heaters, ovens and direct sunlight.
- Once the Qi-Max has been set up in a fixed location, it takes about 24 hours for the protective field to completely build up. The device should then no longer be moved in order to achieve the full effect.
- The walls in your house / apartment do not represent an obstacle to the protective field up to a thickness of 40 cm. Walls that are thicker than 40 cm reduce the effect of the Qi-Home Cell in areas outside the room in which the device is located.



# Safety Instructions

**Please read the following instructions carefully before using your Qi-Max and keep the manual for future reference! Waveguard GmbH accepts no liability for damage resulting from failure to observe these operating instructions.**

## ↘ Climate

The Qi-Max has been designed exclusively for indoor use. The device must not be stored outdoors. In order to ensure that your Qi-Max functions properly, a constant ambient temperature of between 5 °C and 40 °C should be maintained. Exceeding or a falling below this temperature range can lead to damage and thus to an impairment of functionality. Please note that the Qi-Max is frostproof and the temperature specifications refer to a permanent temperature. Avoid strong fluctuations in humidity, as both lid and base are made of wood which, as a natural product, "works" (expands and contracts) when subjected to fluctuations in humidity and temperature. Cracks in the wood can occur, but these do not affect the functionality.

## ↘ Transport

The devices are fully protected for shipping. Always transport the device in its original packaging. Please take care not to hold on to the lid of your Qi-Max during transport.

## ↘ Other notes on use

Do not place any objects (e.g. vases, liquids, burning candles, food, crystals, stones, etc.) on your Qi-Max. Do not put the device in the microwave oven. Changes to the device are not permitted. The Qi-Max must not be opened.

The feet of the Qi-Max must not be unscrewed.

If the device is manipulated, it loses its effectiveness and our company's warranty.

Persons with reduced psychic, sensory or mental abilities as well as a lack of experience / knowledge can use the Qi-Max if they are supervised or instructed regarding the safe use of the device and the resulting dangers are understood.

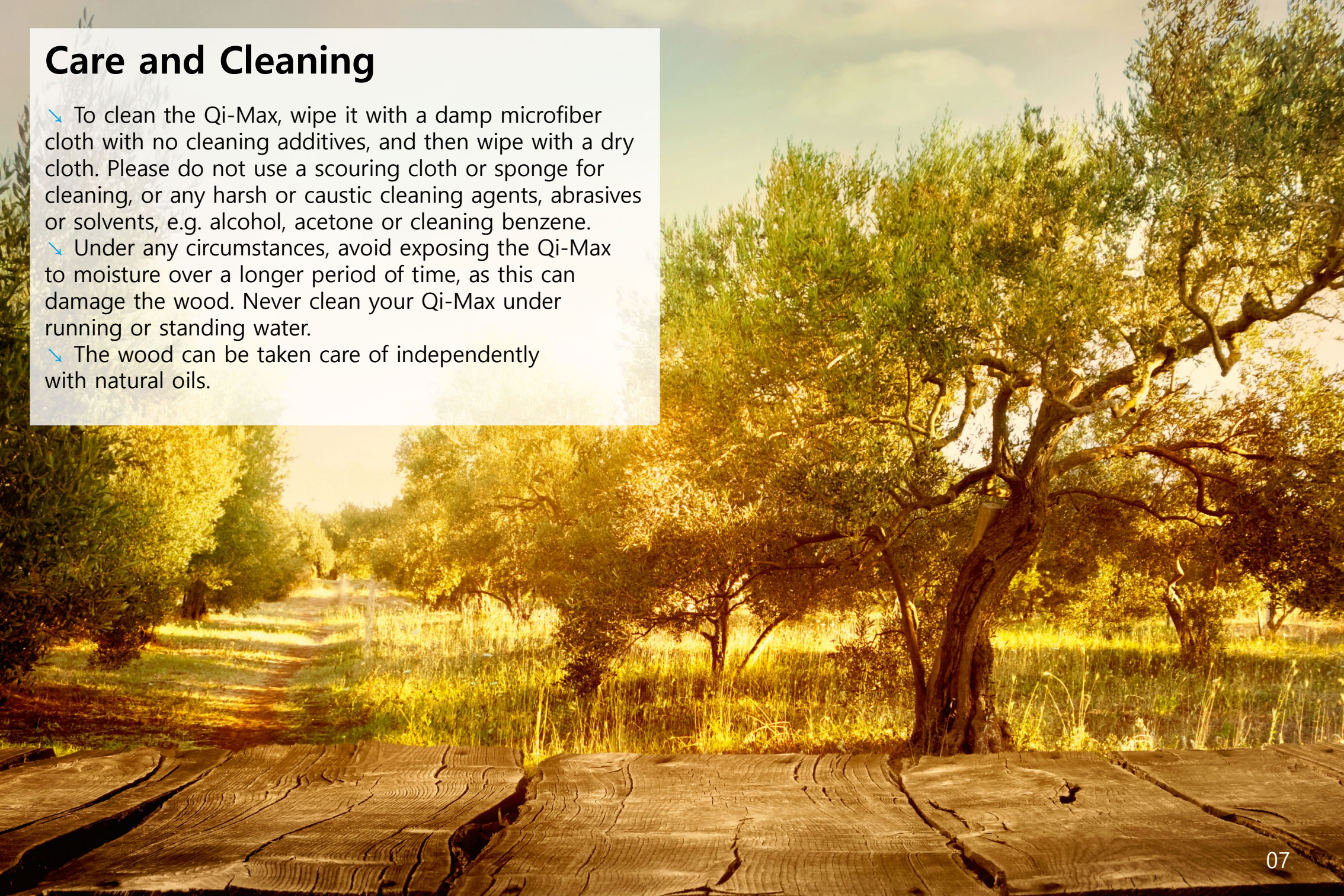
## ↘ Child safety

Keep packaging parts away from children, as there is a risk of suffocation and injury. Do not allow children to play around or with the Qi-Max or move it unattended. There is a risk of injury from the weight of the device. Please note that the Qi-Home Cell is not a toy for children.



# Care and Cleaning

- To clean the Qi-Max, wipe it with a damp microfiber cloth with no cleaning additives, and then wipe with a dry cloth. Please do not use a scouring cloth or sponge for cleaning, or any harsh or caustic cleaning agents, abrasives or solvents, e.g. alcohol, acetone or cleaning benzene.
- Under any circumstances, avoid exposing the Qi-Max to moisture over a longer period of time, as this can damage the wood. Never clean your Qi-Max under running or standing water.
- The wood can be taken care of independently with natural oils.





# Warranty

Our products are subject to strict quality control. However, if the Qi-Max you have purchased should not function properly, we deeply regret it and would ask you to contact your local sales representative or authorized customer service. Waveguard GmbH warrants to the private purchaser that the Qi-Max is free of material defects at the time of delivery for a period of two years from the date of purchase. During the warranty period, you have the option of having the device repaired twice, or exchanging it for a defect-free copy if a material defect is present. If the device is not faultless even then, we will refund the value of the goods.



**The following steps are necessary to claim the warranty:**

Please contact us by phone. You can reach us at the following phone number:

**+49 (0) 3591 - 5 94 75 43**

You are also welcome to describe the problem to our customer service by e-mail. Please write to the following e-mail address:

**<mailto:contact@waveguard.com>**

Please include your name, your customer number and the invoice number of the purchase receipt.

If a return for inspection is agreed upon, please send the device in its original packaging with a suitable outer packaging to the following address:

**Waveguard GmbH  
Bahnhofstraße 16  
02625 Bautzen  
Germany**

The costs of sending the device for inspection shall be borne by the customer.



## Warranty claims are excluded in case of damage caused by:

- ↘ obvious non-observance of these operating instructions
- ↘ abusive or improper treatment
- ↘ external influences (e.g. cold, heat, humidity, grease, overvoltage, dust) to which the device was exposed by the customer
- ↘ use of force (e.g. impact, shock, fall)
- ↘ manipulation of the device (e.g. opening the Qi-Max)
- ↘ unauthorized repair attempts
- ↘ changes made arbitrarily



# Cancellation / Return Form

Please enclose the completed cancellation / return form with your parcel.



**Note:** Please note that when you return the goods, they will be subjected to a quality inspection. A full refund will only be given after a successful quality check. If the goods are damaged or do not correspond to the original condition, we will contact you. In the case of a warranty claim, we reserve the right to rectify the defect. Please note that you have to pay the return costs yourself. It is up to you which shipping company is used for return shipment.

If you can't find the form so please download it from here:

<https://waveguard.com/en/downloads/>



- **Does the Qi-Max require a constant temperature in the living room?**

A constant temperature is not necessary. However, a temperature between 5 °C and 40 °C should be maintained, as in this range a proper function of the device can be guaranteed. Exceeding or falling below this temperature range can lead to damage and thus an impairment of functionality. In addition, strong fluctuations in humidity should be avoided, as both lid and base are made of solid wood which, as a natural product, "works" (expands and contracts) when subjected to fluctuations in humidity. This can cause cracks in the wood. The range of natural differences in color, structure and other differences within a type of wood is one of the characteristics of the natural product and does not constitute a reason for complaint or liability.

- **How can my employees benefit from the Qi-Max?**
  - improved concentration
  - more efficiency and higher performance due to more energy
  - reduction of headaches due to radiation exposure
- **What distinguishes our products from similar articles?**
  - use of high-quality materials
  - comprehensive quality and function control
  - products are not bound to end devices
  - no assembly and installation work necessary
  - outstanding customer service
  - research and advancement with international support
  - German technology





- **I have received my Qi-Max and now feel no effect. Why is that?**

There are two different ways to approach the topic. On the one hand, there are the test possibilities to prove the effect of the Qi-Max. This requires appropriate technical equipment which, unfortunately, is not yet fully accessible to laymen. The devices measurably reduce the radiation exposure to the body, and this can also be tested by us.

The “feeling” of the devices is much more difficult to answer here. Each person is individual. Every body functions and works in its own way. So the effects of the Qi-Max and the Qi-Technology are also felt differently by each living being. Many people feel the effects of the device quickly and intensively. The experience of not very sensitive people is more restrained in the first moment. With these customers, an improvement of, for example, sleeping and recovery / recreation has only been shown by using the device for 20 to 30 days. It is important to understand that there is no patent recipe for the reactions of the human being and the body to the Qi-Technology. Every person is individual, and we love this diversity. Our experience by testing the devices of customers who “don’t feel” anything has shown that the devices work in 99.99 % of cases. It is the customer’s own responsibility to ensure that the expectations are not too high. Our products are in flawless and functional condition when they are shipped. Just because you do not feel an immediate effect, you do not have to assume the worst.

On the other hand, our advice is this: give the device, and most importantly yourself, enough time to get to know the technology. Many people today have forgotten to listen to their bodies: when we are tired, we drink coffee instead of sleeping. When we have headaches, we take pills instead of rest, fresh air and water. That is why today already 40-year-olds suffer a heart attack, stroke or burnout. So it can happen that the body cannot directly perceive the sensitive effects of our Qi-Technology. As an opportunity to compare your own body condition before and during the use of the Qi-Max, you can have your blood values checked by your general practitioner. A blood test before and after about 20 to 30 days is recommended. In the process, particular attention should be paid to the following value: ATP (adenosine triphosphate). Almost all blood values improve due to the protection against radiation.

We are fully committed to the effectiveness of our devices and can prove this effectiveness through various studies, certificates, references and experience reports / testimonials. Please feel free to browse through our website. Here we also have compiled questions and answers about our products: [www.waveguard.com/en/faq/](http://www.waveguard.com/en/faq/)

If not all of your questions could be answered, please contact our customer service or your sales representative directly.



Waveguard GmbH  
Bahnhofstraße 16  
02625 Bautzen  
Germany  
[www.waveguard.com/en](http://www.waveguard.com/en)

